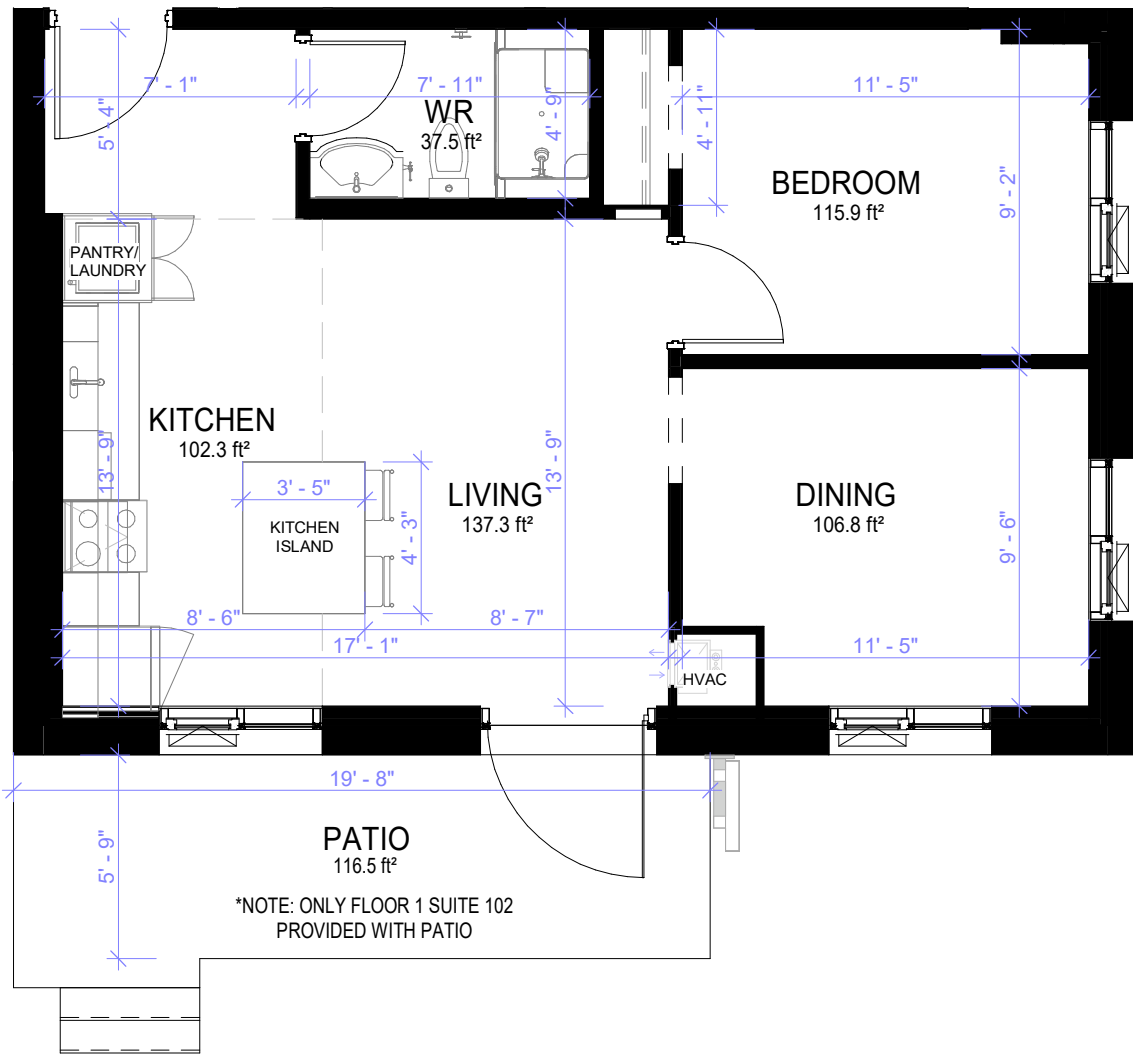


298 HEMLOCK STREET
WATERLOO, ONTARIO

SUITE **B1**

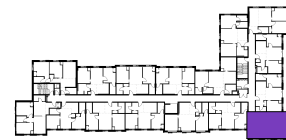


*NOTE: ONLY FLOOR 1 SUITE 102 PROVIDED WITH PATIO

FLOOR: 1. SUITE 102
FLOOR: 2-3. SUITE 203-303
FLOOR: 5-7. SUITE 503- 703

INTERIOR
656ft²

EXTERIOR
116.5ft²



HEMLOCK STREET

All plans, dimensions, areas, and specifications are approximate and are subject to change without notice. Although other factors will possibly influence the final decision, the ultimate satisfaction of the end-user is a high priority. Apartments are to be used to comply with the tenant's lease, all applicable laws, including federal and provincial laws, and all municipal by-laws, including zoning by-laws. Please Refer to the lease and the property management company for a full list of the fixtures, appliances, and furniture provided.