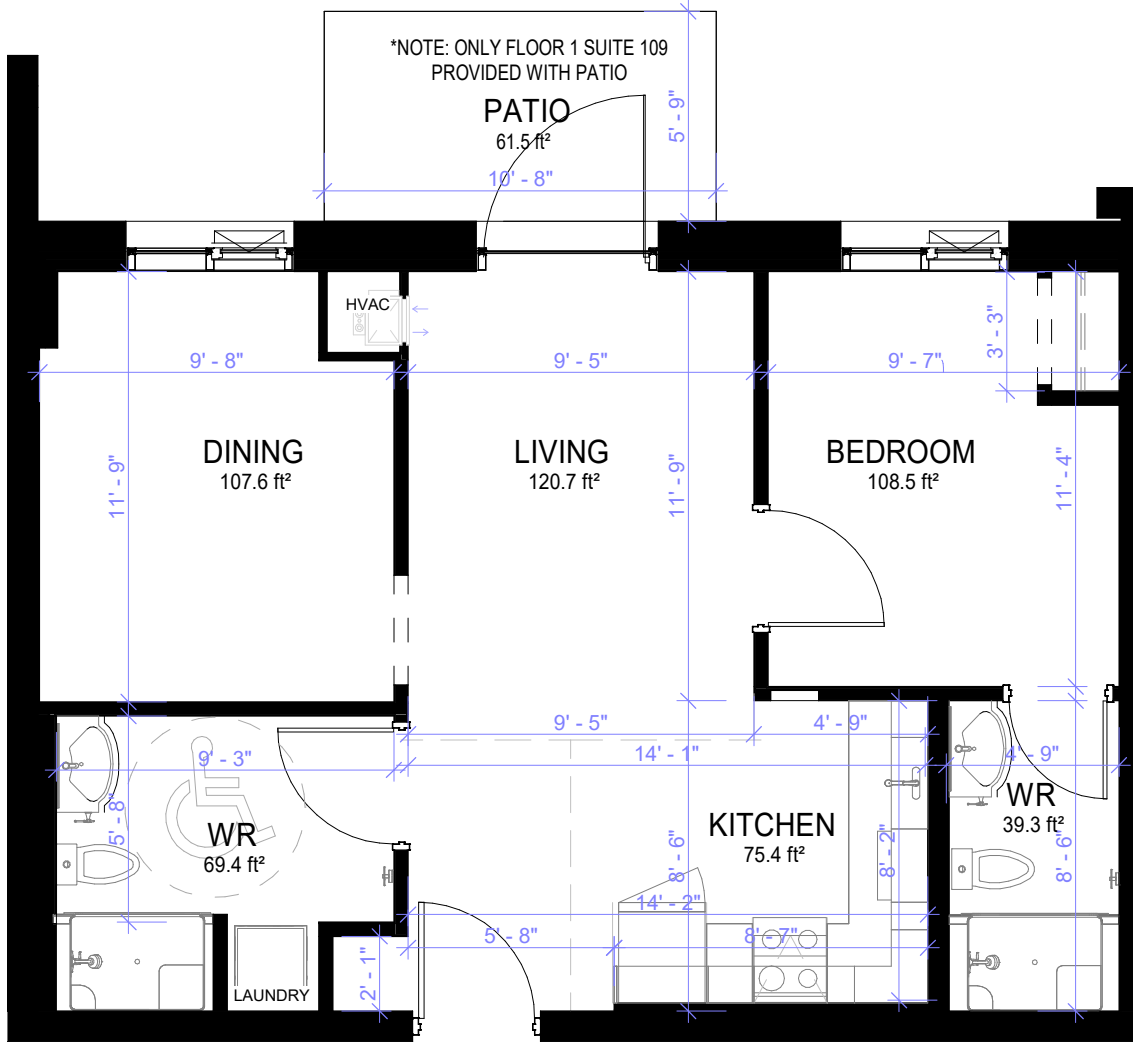


298 HEMLOCK STREET
WATERLOO, ONTARIO

SUITE **A3**



FLOOR: 1. SUITE 109
FLOOR: 2-3. SUITE 212-312
FLOOR: 5-7. SUITE 512-712

INTERIOR
677ft²

EXTERIOR
61.5ft²



All plans, dimensions, areas, and specifications are approximate and are subject to change without notice. Although other factors will possibly influence the final decision, the ultimate satisfaction of the end-user is a high priority. Apartments are to be used to comply with the tenant's lease, all applicable laws, including federal and provincial laws, and all municipal by-laws, including zoning by-laws. Please Refer to the lease and the property management company for a full list of the fixtures, appliances, and furniture provided.