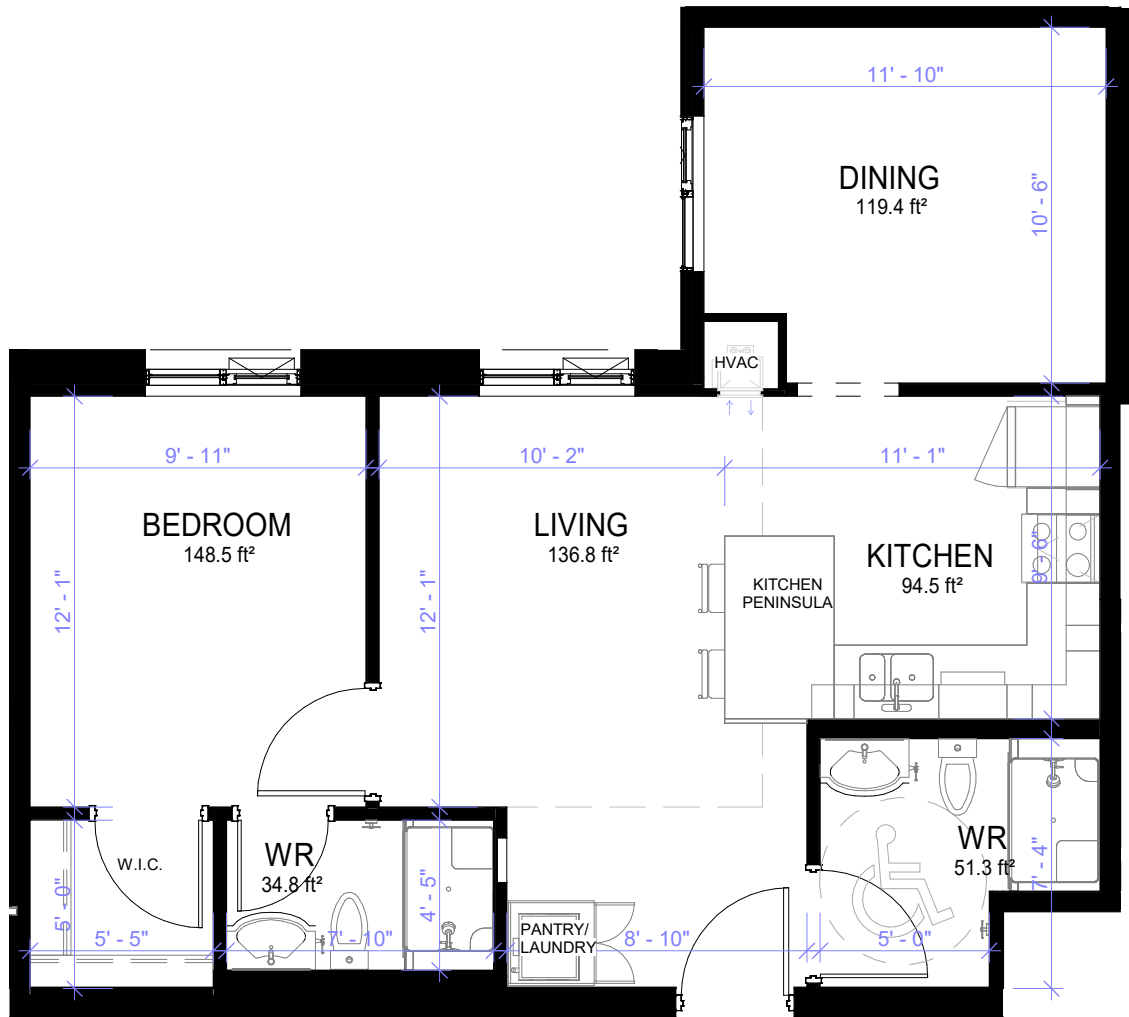


298 HEMLOCK STREET
WATERLOO, ONTARIO

SUITE
C1



FLOOR: 2-3. SUITE 209-309
FLOOR: 5-7. SUITE 509- 709

INTERIOR
770ft²

EXTERIOR
0ft²



All plans, dimensions, areas, and specifications are approximate and are subject to change without notice. Although other factors will possibly influence the final decision, the ultimate satisfaction of the end-user is a high priority. Apartments are to be used to comply with the tenant's lease, all applicable laws, including federal and provincial laws, and all municipal by-laws, including zoning by-laws. Please Refer to the lease and the property management company for a full list of the fixtures, appliances, and furniture provided.