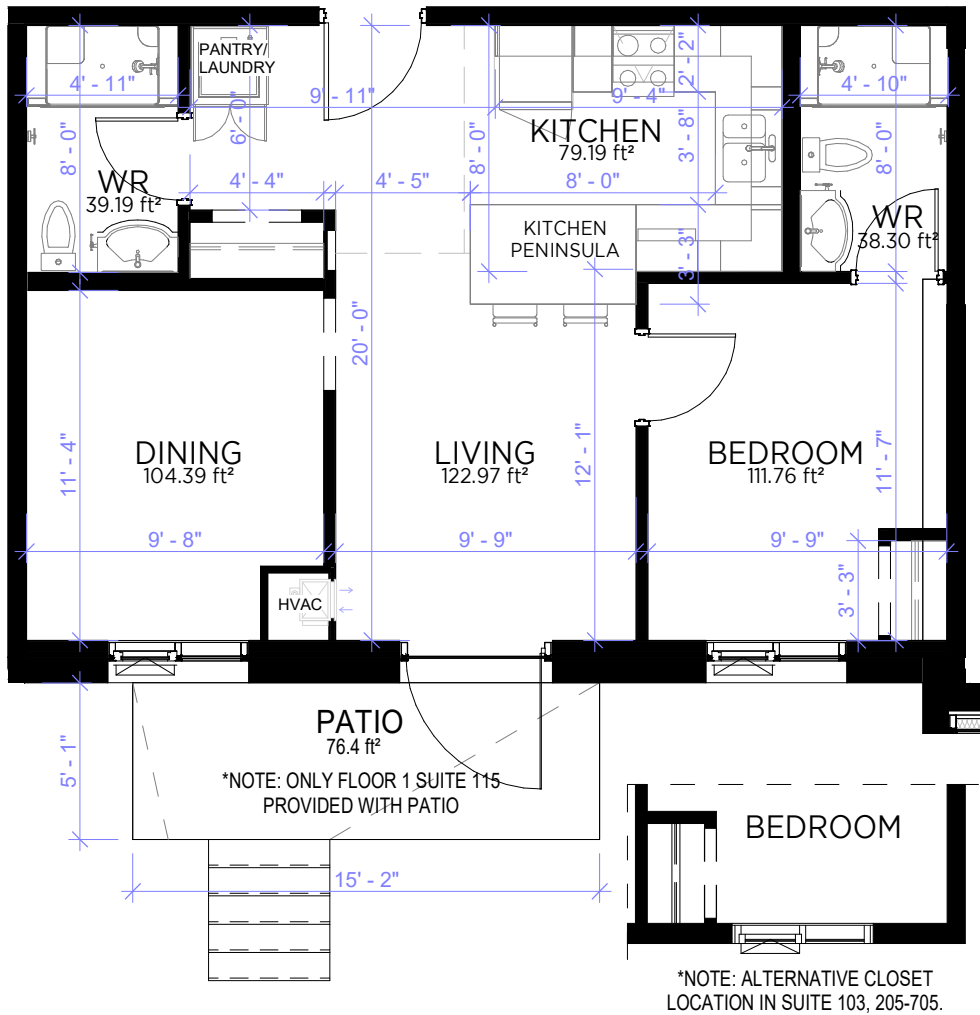


298 HEMLOCK STREET  
WATERLOO, ONTARIO

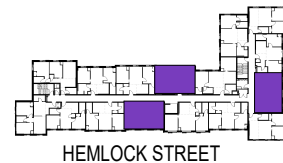
SUITE **A1**



FLOOR: 1. SUITE 103, 115  
 FLOOR: 2-3. SUITE 205-305, 210-310, 219-319  
 FLOOR: 5-7. SUITE 505-705, 510-710, 519-719

**INTERIOR**  
681ft<sup>2</sup>

**EXTERIOR**  
76.4ft<sup>2</sup>



All plans, dimensions, areas, and specifications are approximate and are subject to change without notice. Although other factors will possibly influence the final decision, the ultimate satisfaction of the end-user is a high priority. Apartments are to be used to comply with the tenant's lease, all applicable laws, including federal and provincial laws, and all municipal by-laws, including zoning by-laws. Please Refer to the lease and the property management company for a full list of the fixtures, appliances, and furniture provided.